

Xerxes® Residential Septic Tanks (RST®-II)

An innovative solution for residential and small-flow commercial wastewater

For decades, Xerxes Corporation has been a pioneer in the design and manufacture of fiberglass storage tanks and accessories. With nearly 30 years as a major supplier of underground storage tanks for the petroleum industry, Xerxes is now also a leading supplier of underground tanks for the water and wastewater marketplace.

Xerxes' commercial and industrial wastewater product line includes watertight tanks in capacities ranging from 2,000 gallons to more than 60,000 gallons, plus a full line of accessories designed specifically for the wastewater industry.

To address the needs of residential and small-flow commercial wastewater applications, Xerxes also designs and manufactures the 1,000-gallon and 1,500-gallon RST-II. The RST is designed by wastewater engineers specifically for small-flow, onsite septic applications, such as low-pressure STEP (septic tank effluent pump) or gravity-flow systems.

In addition to the standard RST design, Xerxes also manufactures a tank with an IAPMO label (International Association of Plumbing and Mechanical Officials). A Xerxes IAPMO-labeled tank includes 4-inch inlet and outlet tees, and a baffle/partition wall.

Unlike some tanks available for the wastewater market, Xerxes offers a structurally strong, long-term solution for wastewater needs. Like its other tanks, Xerxes' watertight residential septic tank is designed and manufactured with integral ribs, which provide superior structural strength to the product. High-quality isophthalic/terephthalic polyester resin is used throughout construction. The RST is available factory-assembled with the required accessories installed or as components ready for field-assembly using methacrylate adhesive.

Like all Xerxes tanks, the RST is easy to ship and install, and requires no maintenance. This makes the Xerxes RST an excellent choice for small-flow septic needs, even in hard-to-reach locations and excavations with limited space, because it does not require heavy equipment for shipping or installing.

At Xerxes, excellence in service is as highly valued as excellence in product design and manufacturing. Xerxes' four strategically located manufacturing facilities provide customers with prompt, economical delivery and quality service.

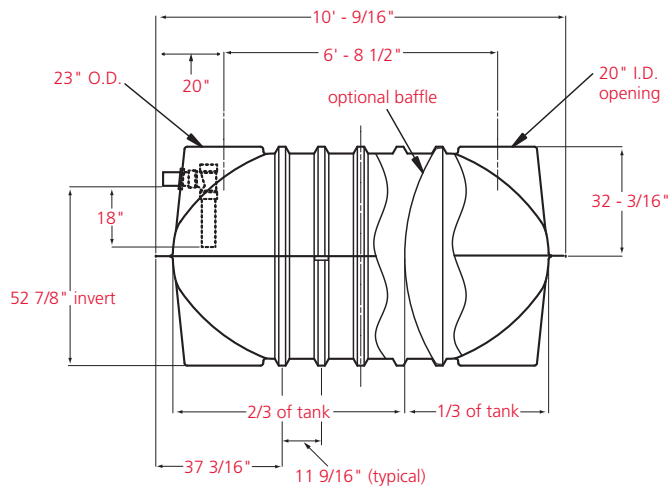


Features and Benefits

- Constructed of long-lasting, rustproof fiberglass
- Available in 1,000-gallon and 1,500-gallon sizes
- Manufactured with high-quality isophthalic/terephthalic polyester resin
- Manufactured with integral ribs for superior structural strength
- Bonded with methacrylate adhesive
- Designed and manufactured to be watertight
- Is lightweight and easy to install in hard-to-reach locations
- Designed for suspended effluent pump vaults or base-mounted pumps
- Comes with access openings for 24-inch access riser
- Available in an IAPMO-labeled model
- Designed with 17 percent reserve capacity (air void)
- Available with optional baffle/partition wall
- Available with Schedule 40 PVC sanitary tees

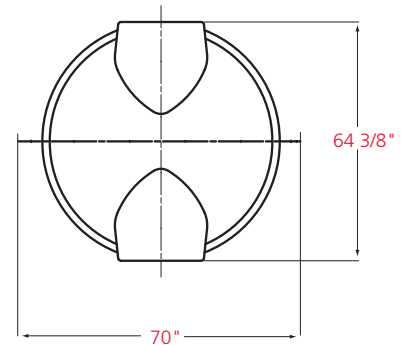
RST® -II Data (nominal)

1,000-Gallon RST-II

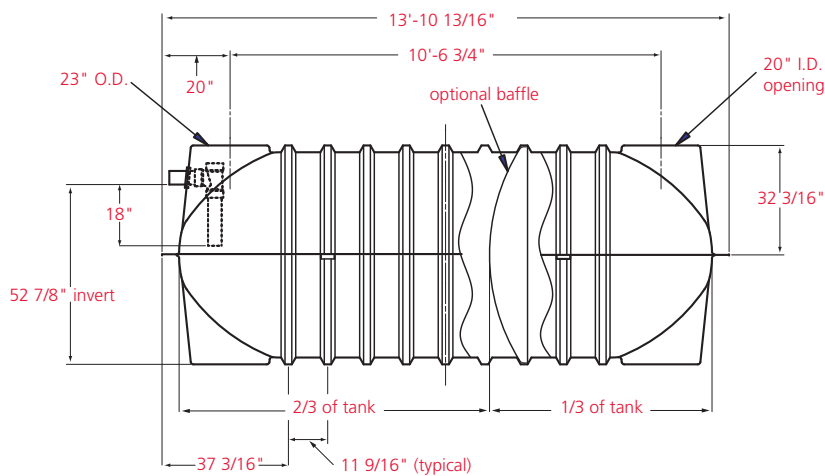


End View

(1,000-gallon & 1,500-gallon RST-II)

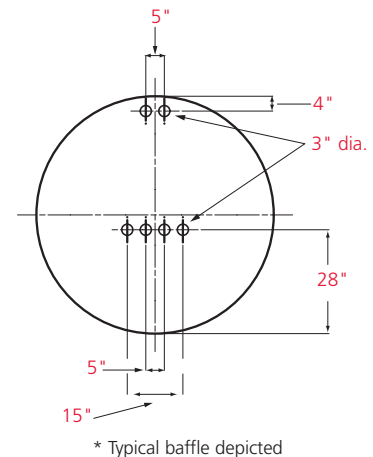


1,500-Gallon RST-II



Optional Baffle *

(1,000-gallon & 1,500-gallon RST-II)



	1,000-gallon RST-II	1,500-gallon RST-II
Height (external)	64 3/8"	64 3/8"
Width (at seam)	70"	70"
Length	10'-9/16"	13'-10 13/16"
Total weight	420 lbs	560 lbs
Weight of each section	210 lbs	280 lbs
Actual capacity (gallons)	1,192 gallons	1,785 gallons
Working gallons at flow line	1,000 gallons	1,500 gallons
Access opening diameter	24" nominal	24" nominal
Inlet invert elevation	52 7/8"	52 7/8"

XERXES®
CORPORATION

7901 Xerxes Avenue South, Minneapolis, MN 55431-1288 ■ (952) 887-1890 ■ Fax (952) 887-1882 ■ www.xerxescorp.com