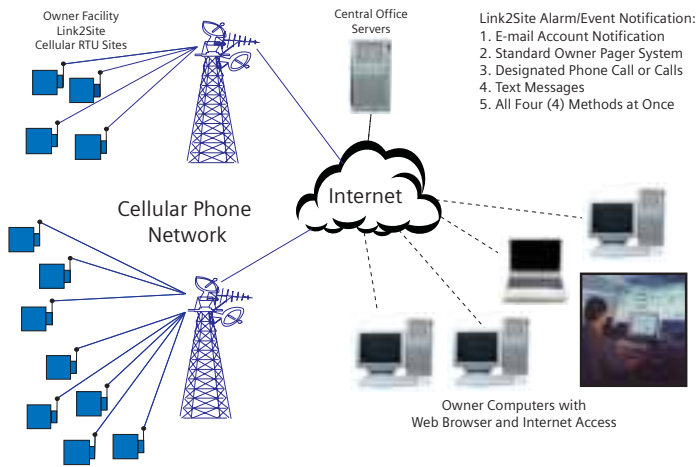




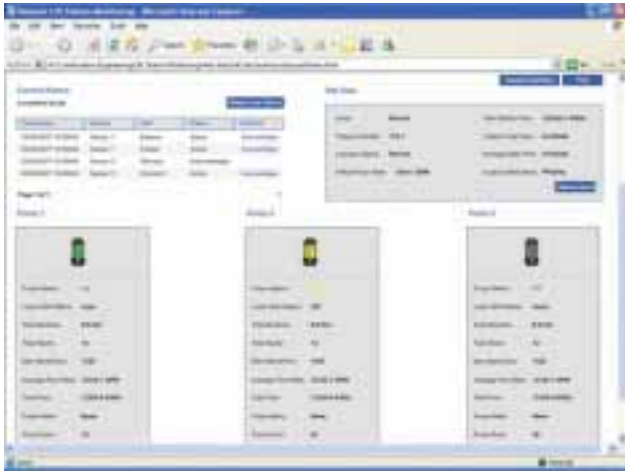
Link2SiteSM

Monitoring and Control System



Link2Site Cellular and Internet Based Monitoring and Control System

Siemens Water Technologies new Link2SiteSM cellular and internet based monitoring and control system is an exciting way to control, monitor and enhance pumping station and lift station equipment and facilities. Whether you're looking for alarm monitoring, complete SCADA control, an easy to implement redundant communication network or an effective way to communicate with remote sites, the Link2Site system is your answer.



Easy to Install, Easy-to-Configure

The Link2Site system uses the cellular networks' strength and coverage to provide a reliable, secure, low-cost, easy-to-install and fully functional SCADA solution. A user-friendly operator interface accessed through your web browser provides much of the functionality of traditional scada solutions. The Link2Site system is a totally integrated, fully automated, control and monitoring solution for pump stations. Suitable for use as a stand alone system or perfect for incorporating into an existing system, Link2Site provides site monitoring as well as 2 way pump control including pump start and stop setpoint adjustment, remote "on/off" control, and alarm setpoint adjustment. Link2Site is advanced, supporting redundant communication topologies such as conventional radio and cellular simultaneously.





Link2Site with IntraLink

Innovative Solutions for Monitoring and Control

We're putting more monitoring and control options in your hands.

Alarm Notification

The Link2Site system provides immediate notification of alarms via email, pager, text message, a phone call or all four. Advanced callout scheduling functionality ensures that the appropriate person is called in the event of a system alarm. Alarms can be acknowledged either by phone or by computer. The Link2Site system's "always on" heartbeat functionality ensures that your system is always connected.

Something for Every User

Siemens Link2Site monitoring and control system is available with a variety of flexible service plans to meet users' individual system needs. These needs could include alarm monitoring, complete SCADA control, an easy-to-implement redundant communication network, or a simple way of communicating with remote sites.

Advanced Features

Advanced pump station performance algorithms are included as a standard and allow for pump station optimization. Optimization reduces energy requirements and prolongs equipment life.

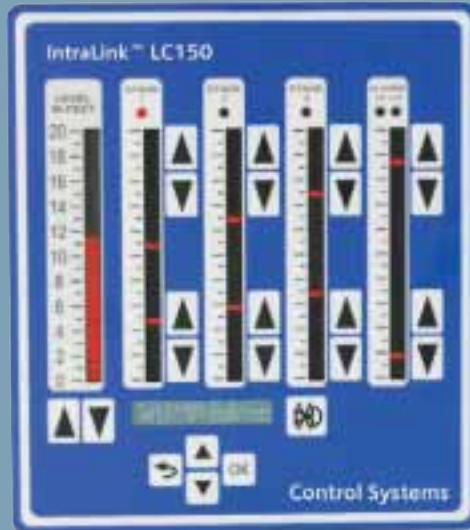
Link2Site also monitors pump usage and performance over time providing operation and maintenance notification and assisting to predict pump station failure before it occurs. Multiple methods of volumetric flow calculation for the station or individual pumps are available to assist with performance analysis.

Security

Site access security, and controller configuration security can be implemented via user entered passwords through the optional keypad or with the new iAccess reader technology. Configuration changes and site access events are time and date stamped and can be recorded and reported over the cellular connection.

Link2Site Modem Specifications

Input Power	8-30 VDC
Network Protocol	GPRS Class 8, 10 & 12
Output Power	GSM850 = 2W, GSM1900 = 1W
Temperature Range	-30° C to +70° C
Certifications	FCC, UL, CE, AT&T
Receiver Sensitivity	-105 dbm (@antenna connector)



LC150 Operator Interface - Optional

Link2Site Service Plans	System Data Update Frequency/Site	Model #
Basic	2 Scheduled Updates/Day + Alarms+ 2 "Update Now" User Updates	ILK-Basic-01
Virtual Real Time	Every Event or Alarm + Unlimited "Update Now" User Updates	ILK-Vtime-01
Real Time	Every 4-5 minutes + Alarms + Unlimited "Update Now" User Updates	ILK-Rtime-01

Part Number	Description
ILK-L2SBOX01-01	Link2Site solution in a 14 x 12 NEMA4 box. Includes modem, LC150-02 base controller, cables, standard antenna w/3' of cable and battery
ILK-L2SCHSSIS01-01	Link2Site solution on a 14 x 12 chassis. Includes modem, LC150-02 base controller, cables, standard antenna w/12'of cable and battery
ILK-L2SSOLKIT01-01	Link2Site solution as a kit. Includes modem, LC150-02 base controller, cables, standard antenna w/12' of LMR174 cable and battery
ILK-L2SMDMKIT-01	Link2Site Modem kit, includes cellular modem,communications cable, power cable, and standard antenna w/12' of cable.
ILK-00RDR001-02	iAccess reader, 10' cable
ILK-00FOB01-01	iAccess key FOBs, package of 5
ILK-RNGAUGE01-01	Standard tipping bucket style rain gauge
ILK-ANTMOUNT-01	Pole or surface antennae mounting kit with brackets

The LC150 Supports a Wide Variety of Communication Media

- Radio (UHF, VHF, Spread Spectrum, Cellular)
- Ethernet, Leased phone line

2 Built-in RS-232 Serial Ports Supports Modbus®, DF1 and IntraLink Open

VFD Stage and Ramp Control for up to 3 VFDs

Diagnostics
On board communication and diagnostics LED support troubleshooting

Isolated Inputs for level pressures and flows

120 Volts AC or 10-30 VDC Operation

Built-in Battery Charger

Pull Apart Terminal Blocks for Ease of Installation & Maintenance



LC150 Base Unit Specifications	Description
Power Supply	120 VAC or 10-30 VDC w/Battery backup
Packaging	DIN rail mount, 5.4" x 7.5" x 2.25"
Communications Port	OI port, 2 RS232 Telemetry Ports support Modbus, DF1 and Link2SiteSM
Discrete Inputs	16 channels, max 30 VDC, isolated
Pump/Alarm Outputs	5 channels, 10A @ 120 VAC relays
High/Low Level Alarm Outputs	2 channels, Open collector, 100 mA @ 5-30 VDC
Analog Inputs (Qty. 2)	2 channels, 4-20 mA or 0-10 VDC
Resolution	16 bits
Calibration	Software
Isolation	1 KV
Excitation Voltage	24 VDC or 6.2 VDC, isolated
Analog Output	1 channel, 1-5 VDC
Certifications	UL, FCC, CE
Optional Operator Interface	Description
Packaging	Door mounted, 8.5" x 7.5" x 1.5"
Power	Supplied through communications cable from Base Unit
Level, Stage, Alarm Setpoint Display	LED columns, 40 segment, ultra bright
LCD	2 x 16 character, backlight, 4 key keypad
Environmental Rating	NEMA 1

Rely on Siemens Water Technologies

Link2Site - low cost, easy to install, highly flexible solution for pump station monitoring and control.



Features:

Full Control or Monitor Only

Custom Overview Map

- "Flyover" functionality
- Color coded status

Easy to Navigate Web Interface

- "View at a Glance" site details page
- Customer overview pages

Pump Control

- Hand/Off/Auto control
- Start and stop setpoint adjustment
- Alarm setpoint adjustment

Alarm Notification

- Voice
- Email
- Text message
- Pager
- All four options

Notification Scheduler Function

Remote Alarm Silence

Alarm History Log

- Time and date stamped record of:
 - Alarms
 - Alarm acknowledgements
 - Alarm clear status

Event Log

- Time and date stamped record of system events

Site Access Log

- Time and date stamped record of
 - Site access, who, when, how long
 - Controller setup access

Maintenance Alerts

- Unbalanced runtimes
- Runtime exceeding setpoint
- Runtime exceeding 30 day average
- Number of starts exceeding setpoint

Reports (Station Summary, Flow History, Rainfall)

- Daily, Monthly, Yearly records of:
 - Station flow total
 - Flows per pump
 - Average, maximum, and minimum flows per station
 - Average, maximum, and minimum flows per pump
 - Pump starts (daily and total)
 - Pump runtimes (daily and total)

Rainfall Report

- Time and date stamped record of rainfall (Requires tipping bucket input)

Custom Graphs

- Multiple pens
- User definable
- Can be saved as standard graph for future use

Standard Graphs

- Station performance (runtime vs # of starts vs flow)
- Analog values (flow, level)

Connection Summary Report

- Time and date stamped record/site
 - Signal strength
 - Average, maximum, minimum signal strength

Update Now Functionality

Exportability of Reports, Graphs, Alarm and Event Logs to Excel

All Screens Supplied with Print Function

Link2Site and IntraLink are trademarks of Siemens and its affiliates.

UL is a registered trademark of Underwriter's Laboratory, Inc.
Modbus is a registered trademark of Schneider Automation, Inc.
NEMA is a registered trademark of National Electrical Manufacturers Association.

The information provided in this brochure contains merely general descriptions or characteristics of performance which in actual case of use do not always apply as described or which may change as a result of further development of the products. An obligation to provide the respective characteristics shall only exist if expressly agreed in the terms of contract.

651-766-2700
800-224-9474
controlsystems.water@siemens.com

©2007 Siemens Water Technologies

CS-L2S-BR-0907
Subject to change without prior notice.