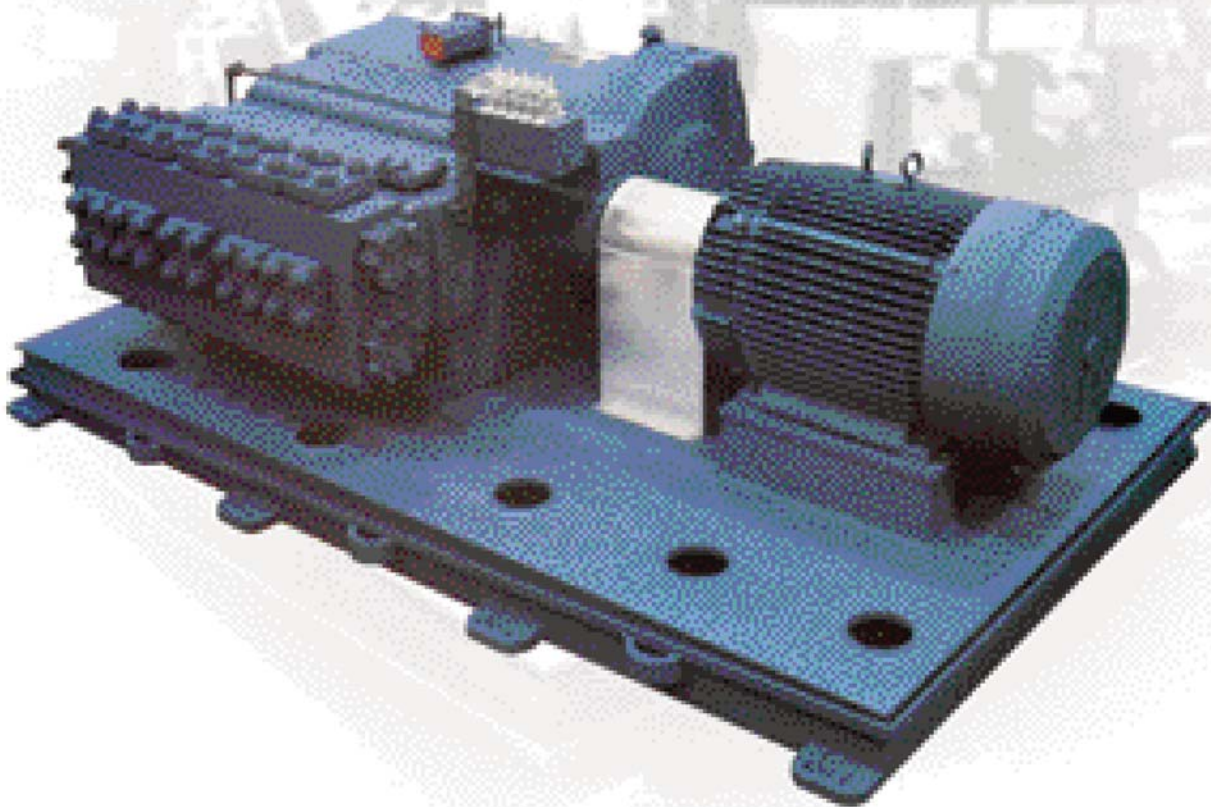


UNION Pump

A Textron Company

Reciprocating Power Pumps

Heavy-Duty Construction
for General and API Services



*From standard units—to complex packages...
Union Pump has provided engineered pump solutions
world wide since 1885*

Engineered Solutions

Reciprocating Pumps

With over 120 years of experience, Union Pump has become the preferred supplier of heavy duty industrial Simplex, Duplex, Triplex, and Quintuplex reciprocating power pumps. At Union Pump, we pride ourselves with manufacturing reliable and high quality pumps to meet the demands of today's industrial applications. All models can be offered to comply with API-674, NACE, or other customer specifications. When your business requires a reciprocating pump, think Union Pump.

T Y P I C A L A P P L I C A T I O N S								
■ Amine & Glycol Circulation	■ Detergent / Soap Slurries	■ Methanol Injection						
■ Ammonia	■ Hydraulic Systems	■ Oil Transfer & Loading						
■ Boiler Feed	■ Hydrocarbon Processing	■ Pipeline						
■ Caustic Charge	■ Hydrostatic Testing	■ Reverse Osmosis						
■ Chemical Injection	■ Hot Oil Transfer / Injection	■ Saltwater Disposal / Injection						
■ CO ₂ Flooding	■ LNG / LPG	■ Urea Carbamate Service						
■ Descaling – Metal Industries	■ Lubrication Injection	■ Water / Water Flood						

Standard Features

Power End

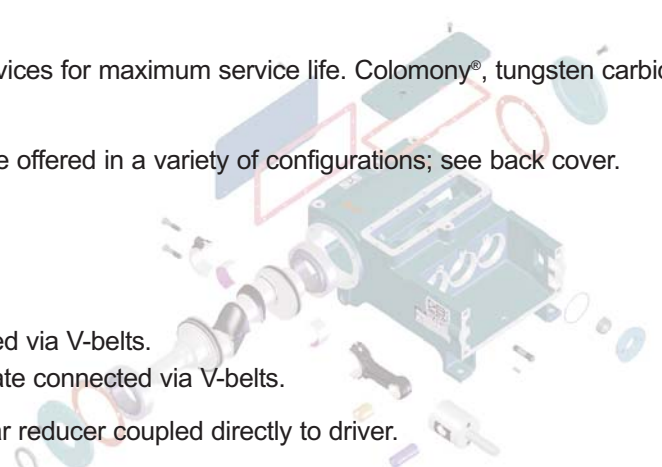
- **Power Frames:** Heavy duty designs, gray cast iron for all models except the TD7000, QD7000, and TD8060 which are fabricated steel.
- **Crankshafts:** Forged Steel on all models.
- **Lubrication:** A well proven splash-gravity feed lubrication design for models SX3 through QD200. Internal pressure lubrication for models TD240 and QD400 as well as all internally geared units and high horsepower models.
- **Bearings:** Heavy duty tapered roller type for main crankshaft bearings with sleeve type connecting rod bearings for models SX3 to QD200. Heavy duty double tapered roller type main crankshaft bearing with sleeve type connecting rod bearings for models TX50 to QX300. Heavy duty spherical roller type for main crankshaft and connecting rod bearings on high horsepower units.

Liquid End

- **Materials of Construction:** Carbon steel, stainless steel, duplex stainless steel, and nickel-aluminum-bronze. Other materials, such as Alloy 20 and Hastelloy B & C, are available as required by the application.
- **Valve Assemblies:** Wing Guided, Disc, Abrasion Resistant, and Ball valve designs for tough services are available in a variety of materials.
- **Plungers:** A wide range of coatings as required by harsh services for maximum service life. Colomony®, tungsten carbide, Stellite®, solid ceramic, and chrome plating to name a few.
- **Stuffing Boxes:** Removable designs for ease of maintenance offered in a variety of configurations; see back cover.

Drive Configurations

- **“V” Belt Drive Options:**
 - **Top mount:** Motor mounted on top of the pump connected via V-belts.
 - **Back mount:** Motor mounted behind pump on a base plate connected via V-belts.
- **Union Bolt-On Gear-Pac:** Pump Power Frame mounted gear reducer coupled directly to driver.
- **Self standing gear reducer:** Self standing gear reducer: External gear assembly baseplate mounted and coupled to the pump and driver.



Standard Power Pump Models^{1,2}

SX3, DX5, TX10, TD28

Simplex, Duplex, and Triplex single acting positive displacement plunger pumps.

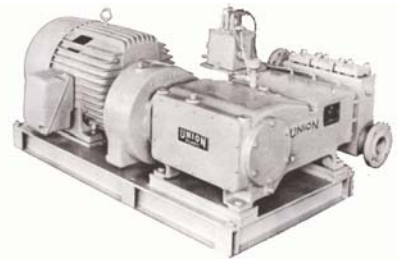
Capacities ³ to	40.4 USGPM	9.2 m ³ /Hr
Pressures to	10,000 PSIG	690 BarG
Temp. range	-100° to 360° F	-73° to 182° C
Max. Continuous Power ⁴	24 HP	18 kW



TD30, TD60, TD90, QD100

Triplex and Quintuplex single acting positive displacement plunger pumps.

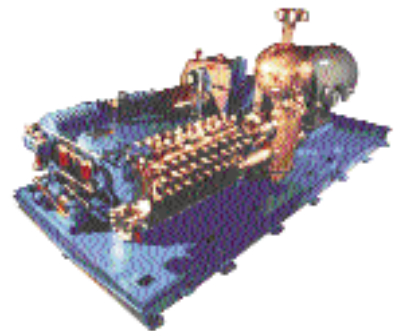
Capacities ³ to	127.5 USGPM	29.0 m ³ /Hr
Pressures to	10,000 PSIG	690 BarG
Temp. range	-100° to 350° F	-73° to 177° C
Max. Continuous Power ⁴	92 HP	69 kW



TD120, QD200, TD240⁶, QD400

Triplex and Quintuplex single acting positive displacement plunger pumps.

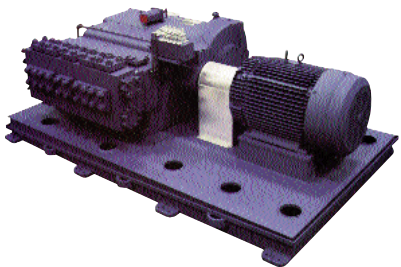
Capacities ³ to	678 USGPM	154 m ³ /Hr
Pressures to	10,000 PSIG	690 BarG
Temp. range	-100° to 350° F	-73° to 177° C
Max. Continuous Power ⁴	532 HP	397 kW



TX50, TX70, TX90⁶, TX115⁶, TX125⁶, TX150⁶, TX200⁶, QX300

Triplex and Quintuplex single acting positive displacement plunger pumps.

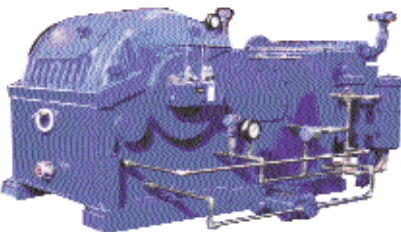
Capacities ³ to	659 USGPM	150 m ³ /Hr
Pressures to	10,000 PSIG	690 BarG
Temp. range	-100° to 350° F	-73° to 177° C
Max. Continuous Power ⁴	315 HP	235 kW



TD7000⁶, QD7000, TD8060⁶

Triplex and Quintuplex single acting positive displacement plunger pumps.

Capacities ³ to	714 USGPM	262 m ³ /Hr
Pressures to	10,000 PSIG	690 BarG
Temp. range	-100° to 350° F	-73° to 177° C
Max. Continuous Power ⁵	848 HP	633 kW



1. All models indicated above are single acting positive displacement plunger pumps.

2. All models can be offered to comply with API-674, NACE and other customer specifications.

3. Capacities indicated above are based upon 100% Volumetric Efficiency and maximum API-674 continuous duty speed. Actual delivered capacity is dependant upon product compressibility and actual Volumetric Efficiency.

4. Maximum Continuous Power indicated is based upon 87% Mechanical Efficiency and maximum API-674 duty speed.

5. Maximum Continuous Power indicated is based upon 90% Mechanical Efficiency and maximum API-674 duty speed.

6. Liquid Ends designed for up to 800° F (427° C) services are available.

